

# Cold room thermoregulation, store consumption, and survival of Africanized and European honey bees (*Apis mellifera* L)

JD Villa, TE Rinderer

Purchased by the  
United States  
Dept. of Agriculture  
for official use.

USDA, ARS Honey-Bee Breeding, Genetics and Physiology Research, 1157 Ben Hur Rd,  
Baton Rouge, LA 70820-5502, USA

(Received 14 September 1992; accepted 6 April 1993)

**Summary** — The potential of Africanized honey bees to survive winters was evaluated by comparing them in groups (40 g, 1.0 kg, 1.5 kg or whole colonies) to European bees in cold rooms. Africanized workers caged in 40-g groups at 15°C aggregated in different positions and in tighter conformations, removed significantly lower amounts of sucrose syrup from feeders, and had higher mortalities than European workers. Africanized bees in 1.0-kg groups also had lower rates of syrup removal but were similar to European groups in aggregation and core temperatures. Groups of 1.5 kg showed similar temperature profiles inside the hives. Whole colonies of both types exposed to temperatures  $\approx 0^{\circ}\text{C}$  died before 10 wk, and did not differ significantly in amounts of recovered dead workers, or in weight loss. These results suggest that some of the important behavioral components of overwintering are present in Africanized honey bees.

**Africanized honey bee / cold tolerance / survival / thermoregulation**

## INTRODUCTION

Africanized and European honey bees have been categorized respectively as 'tropically and temperately adapted' organisms based upon their native ranges and life history characteristics (Winston *et al*, 1984; Danka *et al*, 1987). Differences in the ranges of these 2 bee types as feral populations after their human-assisted introduction to the Americas have also been explained as a consequence of these contrasting evolutionary strategies (Taylor,

1977, 1985; Taylor and Spivak, 1984; Winston *et al*, 1984). European bees have been present in temperate areas of North America for several centuries (Kritsky, 1991). Tropical areas of South America did not appear to have sizable European-derived feral populations, but since 1956 these areas have been rapidly occupied by African-derived honey bees (Taylor, 1977). The adaptation paradigm has been further substantiated by the much slower movement of African-derived honey bees into subtropical areas of Brazil and Argen-

tina and by the presence of largely European bees in temperate Argentina (Kerr *et al.*, 1982; Sheppard *et al.*, 1991).

Given this clear difference in density and distribution it is not surprising that several hypotheses have been presented to explain possible differential survival under cold or winter conditions: 1) Africanized bees may be less precise at maintaining thermal homeostasis through imperfect heat generation and aggregation (Nuñez, 1979); 2) smaller worker size and less precise aggregation might produce higher mass specific metabolic rates at cold temperatures and lead to the early depletion of already small winter stores (Taylor, 1977; Southwick *et al.*, 1990); or 3) 'tropical' life history traits such as shorter worker lifespan and continued brood production during winter months might lead to colony winter mortality (Taylor and Spivak, 1984). We conducted 4 experiments with groups of different sizes to quantify these possible differences in thermoregulation, aggregation, store consumption and worker and colony longevity.

## MATERIALS AND METHODS

Experiments were conducted in a cold room in Acarigua, Venezuela during 1986 and 1987. Bees of 3 different stock types were used: European bees from mated queens imported from the US (E), Africanized bees from local queens with a feral origin (A), or European daughter queens that had mated with feral drones and therefore produced largely F<sub>1</sub> hybrid workers (E x A). Four different experiments were designed to compare behavioral and physiological components of overwintering among the types.

### **Experiment 1: forty g of workers in hoarding cages**

Brood from 64 colonies (33 E, 31 A) was allowed to emerge in incubators at 35°C. A total

of 75 E and 77 A hoarding cages (Kulinđević and Rothenbuher, 1973) were filled with 40 g of adult workers from single colonies (mean number of workers  $\pm$  SE: E = 371  $\pm$  3.2, A = 429  $\pm$  3.9). Caged workers (without queens) were provided with sugar syrup and water, and were maintained at ambient temperature (22–30°C) for up to 3 d until all cages had been filled. Copper-constantan thermocouples were placed between the food vials in 55 of the cages.

At the beginning of the experiment all cages were given 2 vials with 50% sucrose and the cold room temperature was decreased to 15°C ( $\pm$ 2.5°C). The cooling unit inside the room was controlled by a thermostat set at 15°C producing an intermittent air current that reached all the cages. This caused a cooling potential beyond that of still air at that temperature. For the first 11 d, dead bees at the bottom of each cage were counted and removed. Also the positions of the clustered bees in each cage were recorded. An observer (blind to the identity of cages) classified them into 1 of 3 position categories: 1) 'non-viable' when separated from food vials; 2) roof when symmetrically hanging from the 'roof'; or 3) 'side' when on the roof and side wall but still in contact with feeders. Additionally, cluster tightness was scored in 1 of 6 cluster tightness categories ranging from no grouping and highly mobile bees (0), to very tightly packed and immobile bees (5). Syrup vials were weighed and replaced according to need on d 2, 4, 6, 8 and 10.

Preliminary trials had indicated a tendency for Africanized workers to cluster away from feeders and die if contact with feeders was not re-established. Therefore, the cold room was opened for 2 h after daily observations so that the change to ambient temperatures (> 25°C) would allow workers to move, feed and relocate if necessary. Then the room was cooled again to 15°C ( $\pm$  2.5°C) for the next 22 h. Since many Africanized groups clustered in positions away from the thermocouples, the thermocouples in the first 55 cages were moved to cages with clusters near the feeder on d 7, and only temperatures obtained from within the cluster were used to compare differences among types.

Daily frequencies of cluster positions for each type were analyzed by G-tests (Sokal and Rohlf, 1981). Cluster tightness rankings were reduced to 3 classes (0, 1, 2, 3, and 4, 5) to have sufficient numbers in each cell for analysis by type and day with G-tests. Temperatures inside the

clusters on d 7 were compared by ANOVA. The rate of sugar syrup consumption per g of live bees for each 2-d period was calculated and the values were compared by repeated measures ANOVA (Steel and Torrie, 1980; SAS Institute 1990).

### ***Experiment 2: one kg of workers in screen cages***

Workers (1.0 kg) were taken from each of 5A, 5E and 5E x A colonies and put into wooden cages with screened sides (15 x 25 x 35 cm). Cages were given a weighed feeder can with 50% sucrose solution over a screened hole (diameter 10 cm) at the top of the cage. The cages were then maintained in the cold for 24-h intervals sequentially at 20, 10, 5, and 0°C ( $\pm 2.5^\circ\text{C}$ ). At each temperature setting, the cross-sectional dimensions of the hanging cluster (maximum length and height as observed from the screened side) were measured at 20:00 h and at 8:00 h the following day. Also, cluster core temperatures were recorded with copper-constantan thermocouples connected to a telethermometer.

The rapid changes in temperatures in this first test caused leakage of syrup so that food consumption rates could not be estimated. Consequently, a second set of 10 A and 10 E 1.0 kg screened groups were maintained at between 10 and 15°C for a period of 5 d and syrup consumption was measured in these groups.

Maximum cross-sectional areas, ratios of length to height, and core temperatures of the clusters in the first test were compared by repeated measure ANOVA. Total consumption of sucrose syrup by the two types in the second test was compared by ANOVA.

### ***Experiment 3: colonies without brood***

Ten honey combs were placed into each of 4 empty screened hives. Copper constantan thermocouples were distributed in 7-cm grids arranged inside each of the colonies as follows: 3 rows and 6 columns in the space between combs 5 and 6 (center); 2 rows and 4 columns in the spaces between combs 2 and 3 (left), and

between combs 8 and 9 (right) (see figure 2 for the exact positions of thermocouples). Workers (1.5 kg) with a queen were added to each of the hives (2 A, 2 E). Temperatures at the thermocouple locations were recorded at 7:00 and 19:00 h over a 3-d period while ambient temperature oscillated between 10 and 15°C; ambient temperatures were gradually decreased for 5 d until they oscillated between  $-2$  and  $+2^\circ\text{C}$ ; a series of measurements were then made at the same times for 3 d at these new temperatures. Isotherms for 15, 20, 25, and 30°C were drawn for each of the sections between combs (center, left and right) by interpolating the location of these temperatures between adjacent thermocouples.

### ***Experiment 4: colonies with brood***

Five A and five E colonies were selected as matched pairs from research apiaries. Comb weight and brood area were measured in the field. Colonies were then screened, transported, reweighed, and placed in a cold room at 15°C. Adult worker biomass was estimated as the difference between total colony weight and the weight of combs plus hive. Temperatures were decreased over a period of 10 d to 0°C, except for a period of 5 d where they rose to ambient due to failure of the cooling unit's compressor. Colonies remained in this cold room for 73 d.

At the end of the experiment, combs and dead adults were weighed, and brood areas were remeasured. Total adult mortality, final brood area, and rate of weight loss (kg weight loss/kg adults) were compared by ANOVA.

## **RESULTS**

### ***Experiment 1***

There was a distinct difference between the types in the distribution of cluster position and cluster tightness of the 40-g groups exposed to cooling by air currents at 15°C (tables I, II). These differences were fairly consistent through days as

**Table I.** Number of cages with workers clustered in different positions of the cage, arranged by day and type (Experiment 1).

Day	Type	Positions			G	P > G
		Non-viable	Roof	Side		
2	A	33	7	37	43.51	< 0.005
	E	8	40	27		
3	A	26	11	40	17.94	< 0.005
	E	7	26	42		
4	A	20	14	43	8.37	< 0.025
	E	7	12	56		
5	A	15	22	40	5.70	> 0.100
	E	5	25	45		
6	A	18	28	31	10.12	< 0.010
	E	5	26	44		
7	A	22	21	34	11.45	< 0.005
	E	6	24	45		
8	A	20	22	35	10.95	< 0.005
	E	5	27	43		
9	A	24	24	29	9.69	< 0.010
	E	14	42	19		
10	A	20	17	40	2.49	> 0.100
	E	13	14	48		
Total	A	198	166	329	78.01	< 0.001
	E	70	236	369		

indicated by significant *G*-values for most days. When core temperatures were measured in groups that maintained contact with feeders, no differences were found between A groups (mean = 21.55, SE = 6.08, *n* = 20) and E groups (mean = 22.96, SE = 5.38, *n* = 35) (*F* = 0.03, *df* = 1, 53; *P* = 0.8685). Africanized groups removed less sugar syrup per 2-d period during this experiment (table III). When the amount of syrup consumed was rated to

the weight of live bees in each cage, Africanized workers removed less syrup per weight of bees during the first 3 measurement periods (table III); in the fourth 2-d period, when groups were the smallest due to mortality, the Africanized workers had a higher ratio of syrup removal. There was a steeper mortality curve (fig 1) for A workers even though the bees were allowed to recover daily by opening the cold room to ambient temperatures.

**Table II.** Number of cages with workers clustered at different tightness, arranged by day and genotype (Experiment 1).

Day	Type	Tightness			G	P > G
		0-1-2	3	4-5		
2	A	2	42	33	46.07	< 0.001
	E	30	37	8		
3	A	5	43	29	51.15	< 0.001
	E	28	44	3		
4	A	9	32	35	45.72	< 0.001
	E	22	51	2		
5	A	6	36	35	44.31	< 0.001
	E	28	43	4		
6	A	2	40	32	38.26	< 0.001
	E	18	52	5		
7	A	5	25	41	57.98	< 0.001
	E	19	53	3		
8	A	12	32	27	20.04	< 0.001
	E	21	48	6		
9	A	19	34	17	79.07	< 0.001
	E	67	4	0		
10	A	14	22	23	12.72	< 0.001
	E	22	37	8		
Total	A	74	306	272	307.48	< 0.001
	E	255	369	39		

### Experiment 2

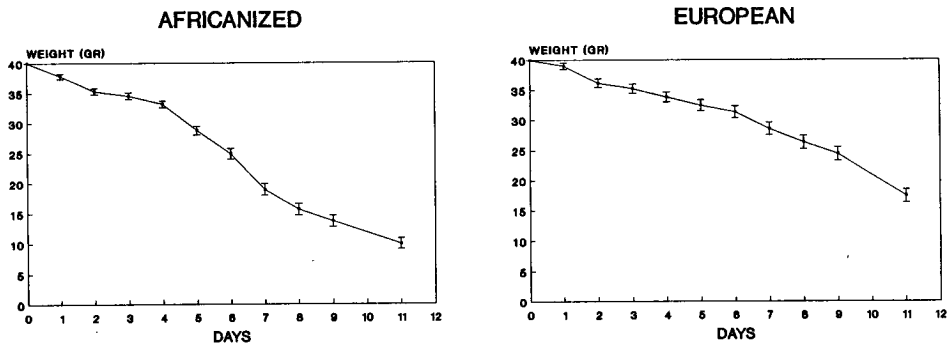
Cluster measurements did not differ as much among bee types in larger 1.0-kg groups in screened cages (table IV). In this case, the mean cross-sectional area and ratio of length to height did not differ significantly. These 2 attributes of clustering were strongly influenced by decreasing temperature in both types. However, a significant interaction between area and ambient tem-

perature was caused by a greater change in cluster dimensions at the highest and lowest ambient temperature in the E groups. Despite these differences in clustering, core temperatures were similar at each of the ambient temperatures and times of day (table V). Even though aggregation and temperatures were similar in these 1.0-kg groups, dramatically lower amounts of syrup were removed by A bees maintained between 10 and 15°C (table IIIc).

**Table III.** Sugar syrup (g of 50% solution) removed by groups of bees of 2 genotypes at cold temperatures.

	Type		Source	F	P > F
	E	A			
Experiment 1					
a) Period 1	46.5 ± 0.86	33.1 ± 1.29	Type	228	< 0.0001
Period 2	36.5 ± 1.38	13.6 ± 0.62	Time	791	< 0.0001
Period 3	21.7 ± 1.32	4.7 ± 0.26	Type·Time	50	< 0.0001
Period 4	8.1 ± 0.54	3.2 ± 0.32			
b) Period 1	1.31 ± 0.026	0.92 ± 0.36	Type	20	< 0.0001
Period 2	1.08 ± 0.028	0.46 ± 0.020	Time	23	< 0.0001
Period 3	0.71 ± 0.029	0.26 ± 0.010	Type·Time	8	< 0.0001
Period 4	0.32 ± 0.017	0.55 ± 0.258			
Experiment 2	408 ± 67.4	87 ± 19.3	Type	21	0.0002

Experiment 1: a) Syrup removed every 2 d by groups started with 40 g bees and maintained at 15°C; b) rate of syrup removal per weight of live bees for each 2-d period. Experiment 2: syrup removed over a period of 5 d by 1.0-kg groups of bees maintained at ≈ 12°C.



**Fig 1.** Estimated biomass of surviving workers (mean ± SE) maintained in hoarding cages at 15°C for 12 d (Experiment 1).

### Experiment 3

Although only 2 colonies of each type were used to measure temperatures in broodless hives with comb, the same biomass of A and E workers produced similar

temperature cross-sectional profiles at each temperature (12.5 and -2.5°C). Also, the areas occupied by bees (as indicated by temperatures) were much smaller for both type of colonies at the lower temperature (fig 2). Measurements within each col-

**Table IV.** Cluster dimensions as observed from side of cage (mean  $\pm$  SE of the area and of ratio of length to height of cross-sectional parabola at 20:00 h) on 1.0-kg groups of bees of 3 bee types at different ambient temperatures.

Variable/type	Temperature					
	20°C	10°C	5°C	0°C		
Area (cm <sup>2</sup> )						
E	332 $\pm$ 19	238 $\pm$ 13	209 $\pm$ 12	201 $\pm$ 8		
E X A	301 $\pm$ 32	202 $\pm$ 16	173 $\pm$ 13	176 $\pm$ 14		
A	250 $\pm$ 29	263 $\pm$ 18	181 $\pm$ 15	184 $\pm$ 15		
Length: height						
E	1.56 $\pm$ 0.13	1.63 $\pm$ 0.16	1.71 $\pm$ 0.18	2.46 $\pm$ 0.44		
E X A	1.59 $\pm$ 0.18	2.65 $\pm$ 0.51	2.74 $\pm$ 0.74	2.68 $\pm$ 0.48		
A	2.20 $\pm$ 0.53	2.20 $\pm$ 0.26	2.33 $\pm$ 0.23	2.74 $\pm$ 0.42		
Source	Area			Length: height ratio		
	F	df	P>F	F	df	P>F
Type	1.47	2,12	0.2677	0.90	2,12	0.4327
Temperature	41.72	3,36	0.0001	5.81	3,36	0.0024
Type*Temperature	3.64	6,36	0.0063	1.48	6,36	0.2143

Results of repeated measure ANOVA on the effects of bee type and temperature on the 2 variables are given (Experiment 2).

only at each temperature were very consistent, and are therefore only presented once in figure 2.

#### Experiment 4

All 5 E and 5 A colonies had died after 10 wk in the cold room. Total Africanized worker mortality was not different from that in European colonies (table VI). Also, differences between the types in total weight loss or rate of weight loss (rated to biomass) were not clearly detectable in these colonies (table VI). Since only the final amount of dead workers was measured, there could have been differences in the mortality curves of workers, and also differ-

ences in the time of death of colonies that were not detectable with our observations.

#### DISCUSSION

This series of experiments indicate that some of the earlier hypotheses of potential winter mortality of Africanized colonies presented to explain their ecological distributions were not correct. There are no marked differences in aggregation and temperature regulation under cold conditions between European and Africanized groups of naturally encountered sizes. Also, instead of the hypothesized higher rates of sucrose store utilization in Africanized groups, under some conditions groups of Africanized bees

**Table V.** Core temperatures (mean  $\pm$  SE in  $^{\circ}\text{C}$  taken at 8:00 and 20:00 in 1.0-kg groups of 3 types of bees maintained at different temperatures.

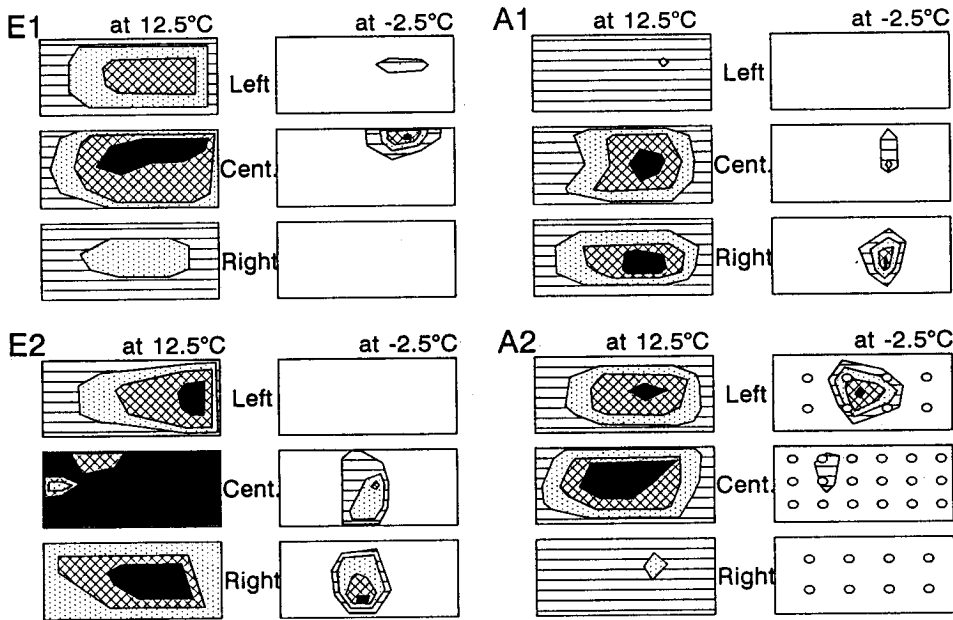
Variable/type	Temperature					
	20 $^{\circ}\text{C}$	10 $^{\circ}\text{C}$	5 $^{\circ}\text{C}$	0 $^{\circ}\text{C}$		
Core temp at 8:00 h						
E	26.6 $\pm$ 0.7	20.9 $\pm$ 0.9	18.4 $\pm$ 1.4	7.2 $\pm$ 2.2		
E X A	28.5 $\pm$ 0.9	24.1 $\pm$ 0.6	19.6 $\pm$ 1.4	8.1 $\pm$ 2.9		
A	28.4 $\pm$ 0.8	21.4 $\pm$ 1.2	18.3 $\pm$ 1.8	9.7 $\pm$ 1.9		
Core temp at 20:00 h						
E	28.2 $\pm$ 0.2	22.6 $\pm$ 1.1	19.8 $\pm$ 1.4	19.0 $\pm$ 1.9		
E X A	28.0 $\pm$ 0.5	25.3 $\pm$ 0.8	21.0 $\pm$ 1.4	19.1 $\pm$ 3.1		
A	28.7 $\pm$ 0.4	23.2 $\pm$ 1.2	21.0 $\pm$ 1.0	20.7 $\pm$ 1.5		
Source	Temp at 8:00 h			Temp at 20:00 h		
	F	df	P>F	F	df	P>F
Type	1.20	2,12	0.3346	0.29	2,12	0.7563
Temperature	91.27	3,36	0.0001	37.62	3,36	0.0001
Type*temperature	0.43	6,36	0.8512	0.63	6,36	0.7053

Results of repeated measure ANOVA are given for core temperatures at each of the 2 times (Experiment 2).

**Table VI.** Initial and final conditions of 5 European and 5 Africanized colonies maintained in a cold room for 73 d at 0 $^{\circ}\text{C}$  (Experiment 4).

Condition	Type		F	P>F
	E	A		
Initial worker population (kg)	2.75 $\pm$ 0.356	2.67 $\pm$ 0.421	0.02	0.880
Initial brood area (sq in)	360.6 $\pm$ 48.95	317.6 $\pm$ 36.41	0.49	0.503
Recovered dead workers (kg)	3.17 $\pm$ 0.429	3.13 $\pm$ 0.391	0.01	0.938
Final brood area (sq in)	2.0 $\pm$ 1.09	18.6 $\pm$ 10.42	2.51	0.152
Ratio of wt loss/ average worker pop (kg/kg)	5.858 $\pm$ 0.8816	4.897 $\pm$ 0.955	0.55	0.481





**Fig 2.** Temperature contours in 2 European colonies (E-1, E-2) and 2 Africanized colonies (A-1, A-2) estimated from measurements with copper-constantan thermocouples between frames 2–3 (left), 5–6 (center), and 8–9 (right) at each of 2 ambient temperatures (12.5 and  $-2.5^{\circ}\text{C}$ ). Approximate positions of the thermocouples in each of the spaces between frames are indicated in colony A-2 at  $-2.5^{\circ}\text{C}$  (Experiment 3). Temperatures between frames: ■  $\geq 30^{\circ}\text{C}$ ; ▨  $25\text{--}30^{\circ}\text{C}$ ; ▩  $20\text{--}25^{\circ}\text{C}$ ; ▪  $15\text{--}20^{\circ}\text{C}$ ; □  $\leq 15^{\circ}\text{C}$ . o Thermocouple position between frames.

actually consume less stores. The possible causes of overwintering mortality in Africanized bees are probably more complex and involve interactions of life history traits such as honey collection, worker longevity and brood production.

### Aggregation and clustering

A fairly widespread notion portrays Africanized colonies as having impaired thermoregulatory capacities. Recent studies (Villa *et al*, 1987; Dietz *et al*, 1988) have shown that Africanized and European colonies at high and low ambient temperatures have similar hive temperatures and that African-

ized workers aggregate at low temperatures. In this study, small groups of Africanized workers actually clustered more tightly than European workers and maintained similar core temperatures. In larger 1.0-kg groups differences in clustering were not as clear, although European bees had greater reduction in volume in response to decreasing temperatures. The fact that the shapes of temperature isotherms appeared to be similar in the 1.5-kg groups with comb suggests that major differences in aggregation may not occur in larger groups.

It is unclear whether observations of unnaturally small groups have any implications for the long-term survival of African-

ized colonies. It could be that imperfect behavioral interactions among workers such as cluster separation from honey stores and decreased food exchange in larger colonies could compound overwintering problems.

### **Food consumption**

The smaller worker size of Africanized workers has led to the hypothesis that colonies might have increased metabolic rates leading to earlier winter depletion of stores. This hypothesis was substantiated by the different slopes in the  $VO_2$  line for the 2 types of bees obtained by Southwick *et al* (1990). In contrast, our study shows that combless groups of Africanized workers, whether small or large, consumed significantly less sucrose syrup than European bees. Even though direct measurements of oxygen consumption can be more precise in detecting a short-term metabolic rate, measurements of store consumption can provide a much more realistic assessment of the energetic costs of thermoregulation over longer periods of time. Our measurements of sucrose removal fall within the broad ranges reported in the literature under similar situations (Free and Spencer-Booth, 1958; Heinrich, 1981). The absence of clearly higher food consumption by Africanized bees was also found in measurements of store consumption in colonies in this and other experiments. Experiments on weight loss of colonies at low temperatures in Argentina (Krell *et al*, 1985; Dietz *et al*, 1986, 1988, 1989), and in Colombia and Venezuela (Villa *et al*, 1987, 1993), have not indicated significant differences from European bees. Different rankings in the rate of store consumption in Africanized, hybrid and European bees (Villa *et al*, 1991, 1993) under different experimental conditions indicate that differences among European and Afri-

canized bees in this character will be determined by local environmental conditions each winter, and will not necessarily be a significant factor determining higher overwintering mortality of Africanized colonies.

### **Life history traits**

Other factors in which Africanized and European bees differed significantly in these tests will likely be more important in determining overwintering mortality. If the potentially tighter clustering of Africanized workers is compounded by shorter lifespans of workers which occurs during active months (Winston and Katz, 1981), and under periods of cold confinement (40-g groups in this study; Woyke, 1973; Villa *et al*, 1991, 1993) a significant proportion of highly African colonies could die in areas having longer winters. The increased mortality of highly African colony during winter will likely exert selective pressures to produce a hybrid population. The improved overwintering capabilities of this hybrid population as well as other more 'temperate' life history characteristics will likely produce a broad hybrid zone in the United States, similar to one found in Argentina (Shepard *et al*, 1991).

### **ACKNOWLEDGMENTS**

We thank L Beaman, R Colmenares, A Escalona and T Stelzer for assistance in preparing the experiments and in data collection. G DeGrandi-Hoffman, J Grace, S Johnson, J Harbo, D Pashley, J Woodring and 3 anonymous reviewers provided useful comments on the manuscript. Facilities were provided by Miel Primavera, Venezuela. This study was carried out in cooperation with the Louisiana Agricultural Experiment Station.

### **Résumé — Thermorégulation, consommation des provisions et survie des**

**abeilles européennes et africanisées (*Apis mellifera* L) en chambre froide.** La possibilité pour les abeilles africanisées (A) de survivre dans des conditions hivernales ou de froid a été évaluée dans une chambre froide en comparant l'aggrégation, la température à l'intérieur des grappes, la consommation de saccharose ou de miel et la survie des ouvrières avec les mêmes données pour les abeilles européennes (E). Quatre types d'expériences ont été faites en chambre froide à Acarigua, Venezuela, en 1986 et 1987 : 1) 40 g d'abeilles ouvrières dans des cagettes maintenues à 15°C pendant 10 j; 2) 1,0 kg d'ouvrières dans des cages grillagées maintenues durant 24 h à 20, 10, 5 et 0°C; 3) des colonies de 1,5 kg d'ouvrières, dépourvues de couvain et maintenues pendant 3 j aux températures ambiantes de 12,5 et -2,5°C; 4) des colonies avec du couvain maintenues à 0°C durant 10 semaines.

Les petits groupes de 40 g d'abeilles A ont plus souvent formé une grappe à l'écart des nourrisseurs et en structure plus serrée que les ouvrières E (Tableaux I et II); elles ont moins consommé de sirop de saccharose (tableau III) et la mortalité des ouvrières a été plus forte (fig 1). En revanche, les groupes d'abeilles de plus de 1 kg maintenues dans des cages grillagées (tableaux IV et V), et les colonies sans couvain à 12,5 et -2,5°C (fig 2) n'ont pas présenté de différences. Les essaims d'abeilles A de 1 kg sans rayons ont moins prélevé de sirop dans les nourrisseurs que les ouvrières E (tableau III). Les 5 colonies E et les 5 colonies A étaient toutes mortes au bout de 10 semaines à 10°C. Dans ces conditions, on n'a pas observé de différences dans la mortalité totale des ouvrières, ni dans la perte de poids (évaluée d'après la biomasse), ni dans la surface de couvain en fin d'expérience (tableau VI).

Ces expériences montrent que certaines interprétations antérieures concernant

la mortalité hivernale des colonies africanisées n'étaient pas correctes (formation de la grappe et capacité thermorégulatrice fortement diminuées, taux métaboliques accrus) et que certains mécanismes comportementaux associés à la survie aux basses températures sont présents chez les abeilles africanisées et pourraient être améliorés par hybridation avec des abeilles européennes ou par sélection naturelle.

#### **Abeille africanisée / tolérance au froid / survie / thermorégulation**

**Zusammenfassung — Thermoregulation in einem kalten Raum, Futterverbrauch und Überleben von afrikanisierten und europäischen Honigbienen.** Die Möglichkeit afrikanisierter Bienen (A), unter kalten oder winterlichen Bedingungen zu überleben, wurde durch den Vergleich von Traubenbildung, Temperatur innerhalb der Traube, Zucker- und Honigverbrauch und Überlebensrate der Arbeiterinnen in kalten Räumen mit Bienen europäischen Ursprungs (E) verglichen. In einem Kühlraum in Acarigua, Venezuela, wurden 1986 und 1987 vier Versuche durchgeführt: 1) 40 g Arbeiterinnen in Versuchskäfigen bei 15°C für 10 Tage; 2) 1.0 kg Bienen in Gitterkäfigen bei 20, 10, 5, und 0°C für 24 h; 3) brutlose Völker mit 1.5 kg Bienen bei einer Umgebungstemperatur von 12.5° und -2.5°C für drei Tage; 4) Völker mit Brut bei 0°C für 10 Wochen. Kleine Gruppen von 40 g A-Bienen bildeten häufiger Trauben abseits vom Futter und in engerem Zusammenschluß als E-Arbeiterinnen (Tabelle I und II), zeigten einen geringeren Verbrauch an Zuckersirup (Tabelle III) und eine höhere Arbeiterinnen-Mortalität (Abb 1). Unterschiede in der Traubenbildung und der Temperatur waren jedoch bei größeren Schwärmen von 1.0 kg in Gitterkäfigen (Tabelle IV und

V) oder in brutlosen Völkern auf Waben bei 12.5°C und -2.5°C nicht festzustellen (Abb 2). Schwärme von 1.0 kg ohne Waben mit Sirup-Futter-gefäßen nahmen weniger Sirup ab als E-Arbeiterinnen (Tabelle III). Alle 5 E- und alle 5 A-Völker waren nach 10 Wochen bei 0°C tot. Unter diesen Bedingungen war kein Unterschied in der Gesamtmortalität der Arbeiterinnen, im Gewichtsverlust (berechnet nach der Biomasse) oder der Brutmenge am Ende festzustellen (Tabelle VI). Diese Versuche weisen darauf hin, daß einige frühere Erklärungen zur Wintermortalität afrikanisierter Völker nicht korrekt sind (stark verringerte Fähigkeit zur Traubenbildung und Temperaturregulierung, erhöhte Stoffwechselwerte) und daß einige der Verhaltensmerkmale, die für das Überleben im kalten Klima nötig sind, auch bei afrikanisierten Bienen vorhanden sind und sowohl durch Hybridisierung mit europäischen Bienen wie durch natürliche Selektion verbessert werden könnten.

#### **Afrikanisierte Bienen / Kältetoleranz / Überleben / Thermoregulation**

#### **REFERENCES**

- Danka RG, Hellmich RL, Rinderer TE, Collins AM (1987) Diet selection ecology of tropical and temperately adapted honey bees. *Anim Behav* 35, 1858-1863
- Dietz A, Krell R, Pettis, J (1986) The potential limit of survival for Africanized bees in the United States. In: *Proc Africanized Honey Bee Symp.* Am Farm Bureau Res Found, Park Ridge, IL
- Dietz A, Krell R, Pettis J (1988) Survival of Africanized and European honey-bee colonies confined in a refrigeration chamber. In: *Africanized Bees and Bee Mites* (Needham GR et al, eds) John Wiley, NY, 237-242
- Dietz A, Leitner JF, Vergara C, Mejia M (1989) Effect of prolonged confinement in a refrigeration chamber on the survival of Africanized and European honey bee colonies. In: *Proc 4th Am Bee Res Conf.* Am Bee J 129, 815
- Free JB, Spencer-Booth Y (1958) Observations on the temperature regulation and food consumption of honeybees (*Apis mellifera*). *J Exp Biol* 35, 930-937
- Heinrich B (1981) The mechanisms and energetics of honeybee swarm temperature regulation. *J Exp Biol* 91, 25-55
- Kerr WE, del Rio SL, Barrionuevo MD (1982) Distribucao da abelha africanizada em seus limites ao sul. *Cienc Cult* 34, 1493-1442
- Krell R, Dietz, Eischen FA (1985) A preliminary study on winter survival of Africanized and European honey bees in Cordoba, Argentina. *Apidologie* 16, 109-118
- Kristsky G (1991) Lessons from history, the spread of the honey bee in North America. *Am Bee J*, 367-370
- Kulinčević JM, Rothenbuhler WC (1973) Laboratory and field measurements of hoarding behavior in the honeybee. *J Apic Res* 12, 179-182
- Núñez JA (1979) Comparative study of thermoregulation between European and Africanized *Apis mellifera* in Brazil. *J Apic Res* 18, 116-121
- SAS Institute (1990) *SAS/STAT User's Guide*. SAS Institute, Cary, NC
- Sheppard WS, Rinderer TE, Mazzoli JA, Stelzer FA, Shimanuki H (1991) Gene flow between African- and European-derived honey bee populations in Argentina. *Nature* 349, 782-784
- Sokal RR, Rohlf FJ (1981) *Biometry*. WH Freeman, San Francisco, CA
- Southwick EE, Roubik DW, Williams JM (1990) Comparative energy balance in groups of Africanized and European honey bees: ecological implications. *Comp Biochem Physiol* 97A, 1-7
- Steel RGD, Torrie JH (1980) *Principles and Procedures of Statistics*. McGraw-Hill, NY
- Taylor OR (1977) The past and possible future spread of Africanized honeybees in the Americas. *Bee World* 58, 19-30
- Taylor OR (1985) African bees: potential impact in the United States. *Bull Entomol Soc Am* 31, 14-24
- Taylor OR, Spivak M (1984) Climatic limits of tropical African honeybees in the Americas. *Bee World* 65, 38-47

- Villa JD, Gentry C, Taylor OR (1987) Preliminary observations on thermoregulation, clustering, and energy utilization in African and European honey bees. *J Kansas Entomol Soc* 60, 4-14
- Villa JD, Koeniger N, Rinderer TE (1991) Overwintering of Africanized, European, and hybrid honey bees in Germany. *Environ Entomol* 20, 39-43
- Villa JD, Rinderer TE, Collins AM (1993) 'Overwintering' of Africanized, European, and hybrid honey bees in the Andes of Venezuela. *Environ Entomol* 22, 183-189
- Winston ML, Katz SJ (1981) Longevity of cross-fostered honey bee workers (*Apis mellifera*) of European and Africanized races. *Can J Zool* 59, 1571-1575
- Winston ML, Taylor OR, Otis GR (1984) Some differences between temperate European and tropical African and South American honeybees. *Bee World* 64, 12-21
- Woyke J (1973) Experiences with *Apis mellifera adansonii* in Brazil and Poland. *Apiacta* 8, 115-116